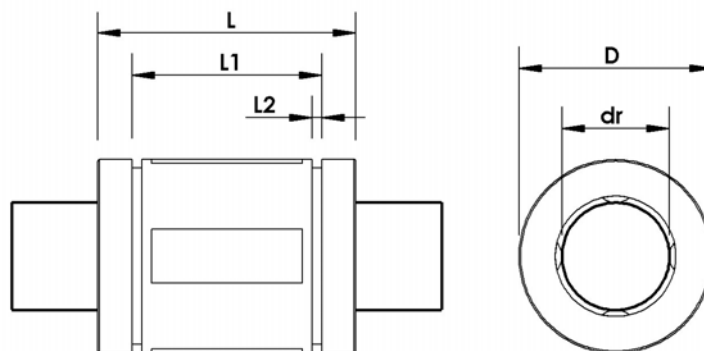


LMESxx Bearing

With Synthetic Resin Housing

Shaft Size: 10 – 50 mm



These LMES type bearings are metric series bearings normally used in Europe.

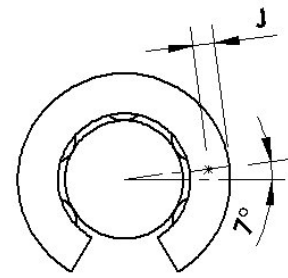
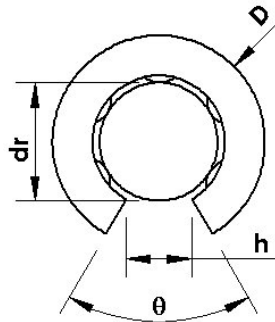
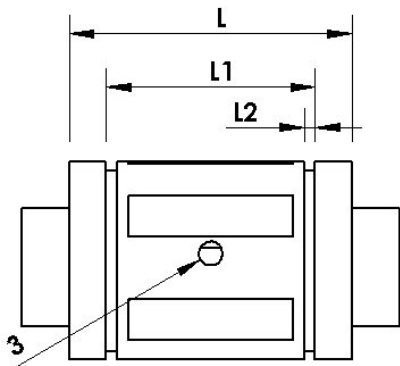
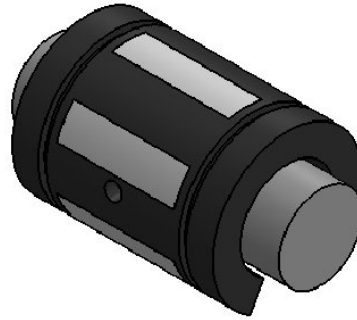
Shaft Dia (mm)	Part number		No of ball row	Dimensions (mm)				dr - Working Bore Dia	dr Tol.	Load Rating		Wgt. (g)
	w/o seal	with seal		D ¹	L ± 0.2	L1 ± 0.2	L2 min			Dyn C (N)	Static Co (N)	
10	LMES 10	LMES 10UU	5	19	29	21.7	1.35	10	0.008 / 0	750	550	17
12	LMES 12	LMES 12UU	5	22	32	22.7	1.35	12		1230	1100	23
16	LMES 16	LMES 16UU	5	26	36	24.7	1.35	16	0.009 / 0.001	1550	1250	28
20	LMES 20	LMES 20UU	6	32	45	31.3	1.65	20		2580	1670	61
25	LMES 25	LMES 25UU	6	40	58	43.8	1.90	25	0.011 / 0.001	3800	2750	122
30	LMES 30	LMES 30UU	6	47	68	51.8	1.90	30		4710	2800	185
40	LMES 40	LMES 40UU	6	62	80	60.4	2.20	40	0.013 / 0.002	6500	5720	360
50	LMES 50	LMES 50UU	6	75	100	77.4	2.70	50		11460	7940	580

¹ Based on nominal housing bore

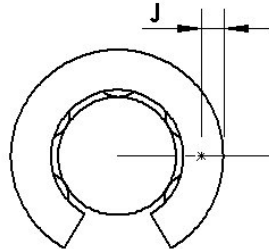
LMESxxOP Bearing

With Synthetic Resin Housing

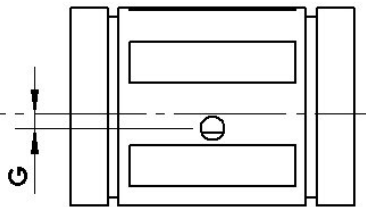
Shaft Size: 12 – 50 mm



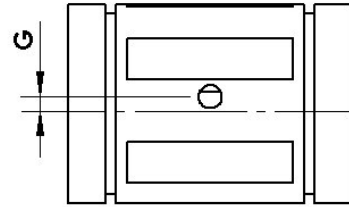
LMES 12OP



LMES 16OP & LMES 20OP



LMES 25OP



LMES 30OP - LMES 50OP

These LMES type bearings are metric series bearings normally used in Europe.

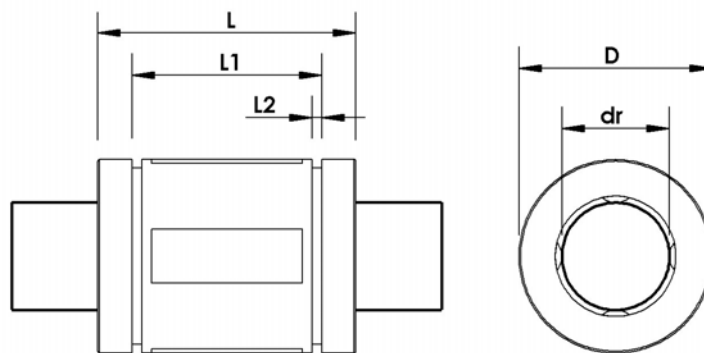
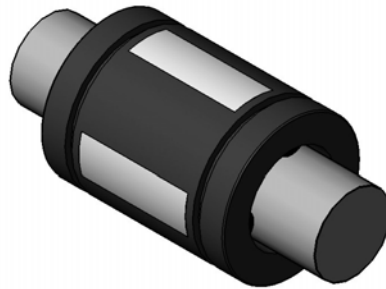
Shaft Dia (mm)	Part number		No of ball row	dr - Working Bore Dia	dr Tol.	Dimensions (mm)							Load Rating		Wgt. (g)
	w/o seal	with seal				D ¹	L ± 0.2	L2	h	θ	G	J	Dyn C (N)	Static Co (N)	
12	LMES 12OP	LMES 12UUOP	4	12	0.008 / 0	22	32	1.35	6.5	66	----	0.7	1290	1260	18
16	LMES 16OP	LMES 16UUOP	4	16	0.009 / 0.001	26	36	1.35	9	68	----	0.7	1640	1320	22
20	LMES 20OP	LMES 20UUOP	5	20		32	45	1.65	9	55	----	0.9	2630	1720	51
25	LMES 25OP	LMES 25UUOP	5	25	0.011 / 0.001	40	58	1.90	11.5	57	1.5	1.4	3910	2850	102
30	LMES 30OP	LMES 30UUOP	5	30		47	68	1.90	14	57	2	2.2	4850	2900	155
40	LMES 40OP	LMES 40UUOP	5	40	0.013 / 0.002	62	80	2.20	19.5	56	1.5	2.7	6700	5900	300
50	LMES 50OP	LMES 50UUOP	5	50		75	100	2.70	22.5	54	2.5	2.3	11700	8100	480

¹ Based on nominal housing bore

LMBSxx Bearing

With Synthetic Resin Housing

Shaft Size: 0.25 – 2 inch



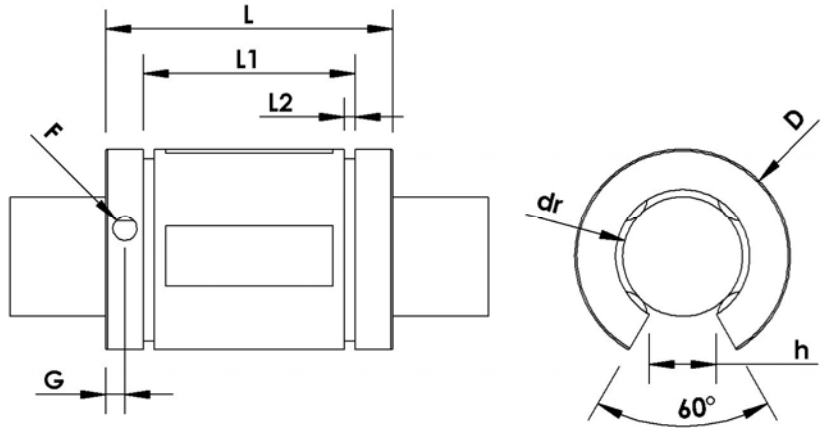
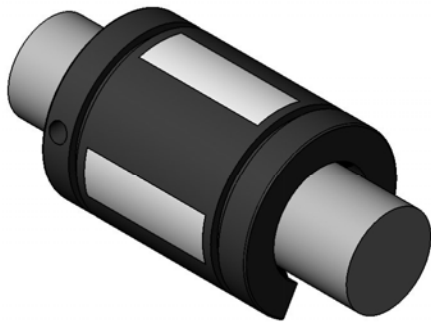
These LMBS type bearings are inch series bearings normally used in the US.

Shaft Dia (inch)	Part number		No of ball row	dr - Working Bore Dia	dr Tol.	D	L	L ₁	L ₂ min	Load Rating		Weight (lbf)
	w/o seal	with seals								Dyn C (lbf)	Static Co (lbf)	
1/4	LMBS 4	LMBS 4UU	4	0.250	0 / - 0.0005	0.5000	0.750 0.735	0.511 0.501	0.039	57	49	0.01
3/8	LMBS 6	LMBS 6UU	4	0.375		0.6250	0.875 0.860	0.699 0.689	0.039	78	66	0.02
1/2	LMBS 8	LMBS 8UU	4	0.500		0.8750	1.250 1.230	1.032 1.012	0.050	190	190	0.05
5/8	LMBS 10	LMBS10UU	5	0.625		1.1250	1.500 1.480	1.105 1.095	0.056	290	340	0.08
3/4	LMBS 12	LMBS 12UU	6	0.750		1.2500	1.625 1.605	1.270 1.250	0.056	500	430	0.14
1	LMBS 16	LMBS 16UU	6	1.000		1.5625 2.230	1.884 1.864	0.070	820	780	0.29	
1 1/4	LMBS 20	LMBS 20UU	6	1.250	0 / - 0.0006	2.0000	2.625 2.600	2.004 1.984	0.068	1240	1270	0.4
1 1/2	LMBS 24	LMBS 24UU	6	1.500		2.3750 2.970	2.410 2.390	0.086	1510	1540	0.8	
2	LMBS 32	LMBS 32UU	6	2.000	0 / - 0.0008	3.0000	4.000 3.960	3.193 3.163	0.105	2230	2580	1.38

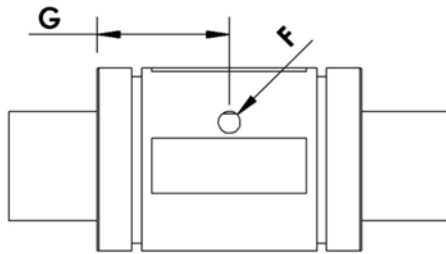
LMBSxxOP Bearing

With Synthetic Resin Housing

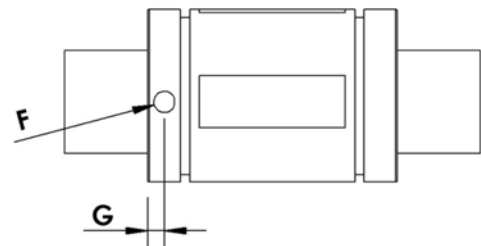
Shaft Size: 0.25 – 2 inch



LMBS12OP THRU LMBS20OP



LMBS08OP



LMBS10OP

These LMBS type bearings are inch series bearings normally used in the US.

Shaft Dia (inch)	Part number		No of ball row	dr - Working Bore Dia	dr Tol.	D	L	L ₁	L ₂ min	F	G	h	J	Load Rating		Wgt. (lbf)
	w/o seal	with seals												Dyn C (lbf)	Static Co (lbf)	
1/2	LMBS 8OP	LMBS 8UUOP	3	0.500	0 / - 0.0005	0.8750	1.250	1.032	0.050	0.14	0.63	0.32	Thru	210	190	0.03
							1.230	1.012								
5/8	LMBS 10OP	LMBS 10UUOP	4	0.625	0 / - 0.0005	1.1250	1.500	1.105	0.056	0.11	0.13	0.38	0.039	320	340	0.06
							1.480	1.095								
3/4	LMBS 12OP	LMBS 12UUOP	5	0.750	0 / - 0.0005	1.2500	1.625	1.270	0.056	0.14	0.13	0.43	0.059	510	430	0.11
							1.605	1.250								
1	LMBS 16OP	LMBS 16UUOP	5	1.000	0 / - 0.0005	1.5625	2.250	1.884	0.070	0.14	0.13	0.56	0.047	830	780	0.21
1 1/4	LMBS 20OP	LMBS2 0UUOP	5	1.250	0 / - 0.0006	2.0000	2.625	2.004	0.068	0.20	0.19	0.63	0.090	1250	1270	0.35
							2.600	1.984								
1 1/2	LMBS 24OP	LMBS 24UUOP	5	1.500	0 / - 0.0006	2.3750	3.000	2.410	0.086	0.20	0.19	0.75	0.090	1520	1540	0.67
							2.970	2.390								
2	LMBS 32OP	LMBS 32UUOP	5	2.000	0 / - 0.0008	3.0000	4.000	3.193	0.105	0.27	0.31	1.00	Thru	2250	2580	1.10
							3.960	3.163								